

Safety First

The Dairyland Reservoir is a popular lake area. Safety awareness near hydroelectric dams is critically important when boating, swimming or fishing in the general area.



Follow These Rules Around Dams:

- Stay away from any flowing spillway. Dangerous, reverse currents in the tailwaters of dams can cause fatalities.
- Stay away from restricted areas. Currents near dams are extremely hazardous.
- Look for and obey all warning signs.
- Wear a personal flotation device.
- Avoid water recreation on rivers with high flows or flooding conditions.

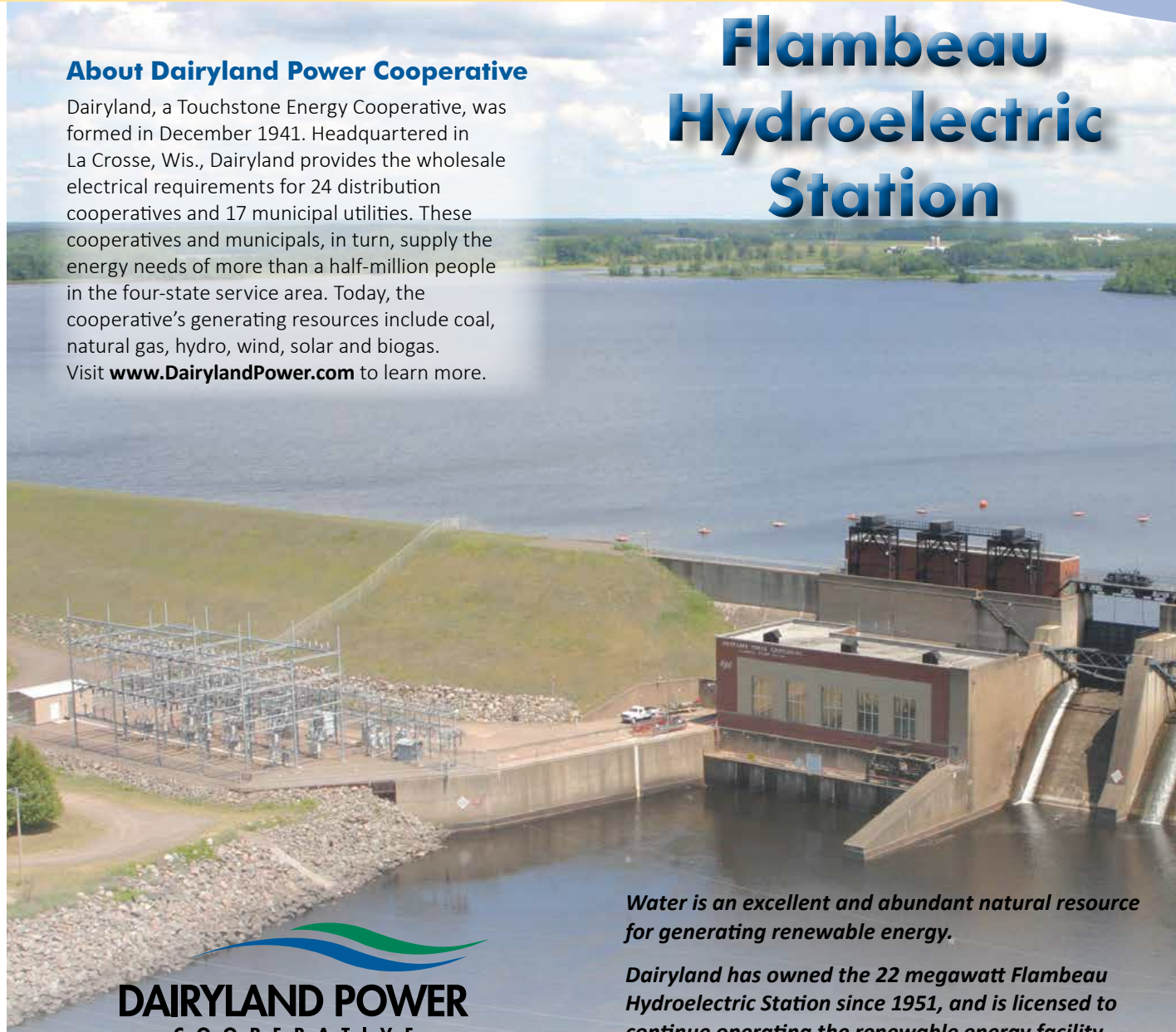
Residents of the Ladysmith area and any interested member of the public has access to dam safety education, water level information and maps at www.DairylandPower.com.



About Dairyland Power Cooperative

Dairyland, a Touchstone Energy Cooperative, was formed in December 1941. Headquartered in La Crosse, Wis., Dairyland provides the wholesale electrical requirements for 24 distribution cooperatives and 17 municipal utilities. These cooperatives and municipals, in turn, supply the energy needs of more than a half-million people in the four-state service area. Today, the cooperative's generating resources include coal, natural gas, hydro, wind, solar and biogas. Visit www.DairylandPower.com to learn more.

Flambeau Hydroelectric Station




Water is an excellent and abundant natural resource for generating renewable energy.

Dairyland has owned the 22 megawatt Flambeau Hydroelectric Station since 1951, and is licensed to continue operating the renewable energy facility until 2037.

The water-powered Flambeau Hydro Station is located on the Flambeau River near Ladysmith, Wis.

DAIRYLAND POWER
COOPERATIVE

A Touchstone Energy® Cooperative 

3200 East Avenue South • P. O. Box 817
La Crosse, WI 54602-0817

About the Flambeau Hydro Station

Water from the 1,900 acre Dairyland Reservoir supplies the energy to the power plant's three turbine generators. The Reservoir holds over 15 billion gallons of water. It was formed by construction of a mile-long earthen dike and concrete dam, which rises 90 feet above bedrock. Construction took place between 1949-1951.

The other significant part of the Flambeau Hydro Station is the spillway. It includes three large gates that permit the passage of water over the concrete barrier for continuation down the Flambeau River. The gates are 40 ft. wide and 26 ft. high and are designed to safely pass flows of the largest flood ever expected.

The facility is operated in a "run of the river" manner to better protect wildlife resources.

Creating Renewable Energy

Water from the Reservoir is routed into the power plant to one—or up to three—turbines for efficient production of electricity.

Gates regulate the flow of water through the turbines. The wider the gate opens, the more horsepower is created through greater flow. The horsepower is then converted to electrical energy in each generator.

The renewable energy generated by the Flambeau Hydro Station is then routed to a nearby substation. Here, the voltage is stepped up to 69 kilovolts before being fed into the electrical grid to power homes and businesses.



Flambeau Recreational Opportunities

The Dairyland Reservoir, the river and the beautiful land surrounding these water resources are rich with recreational opportunities. Dairyland strives to be a good neighbor in communities where we do business, including supporting natural resources.

Dairyland has made major environmental and recreational enhancements to the land adjacent to the Reservoir. By creating and improving parklands and roads, constructing boat landings and providing handicap-accessible areas, quality of life is enhanced for residents and visitors.

By working cooperatively with the local Wildlife Restoration Association (WRA) and Rusk County Forestry, Dairyland has leveraged resources to further improve recreational opportunities and wildlife habitat. For example, the collaboration between Dairyland and the WRA has resulted in significant improvements to the Reservoir's fish habitat.

Come enjoy the Dairyland Reservoir and the 24 miles of shoreline that offer scenic hiking, great fishing, camping, snowmobiling and fun in every season!



Dairyland Reservoir Parks

Dairyland Power Tailwater Park:

Fishing, Picnicking, Portage

Community Park: Fishing, Picnicking, Hiking, Boat Launch

Quarry Park: Fishing, Picnicking, Hiking, Hand Launch

Josie Creek Park Extension: Fishing, Picnicking, Hiking, Boat Launch, Playground

Point Park: Fishing, Picnicking, Hand Launch

Einar P. Johnson Memorial Park: Fishing, Picnicking, Hiking, Boat Launch, Portage

